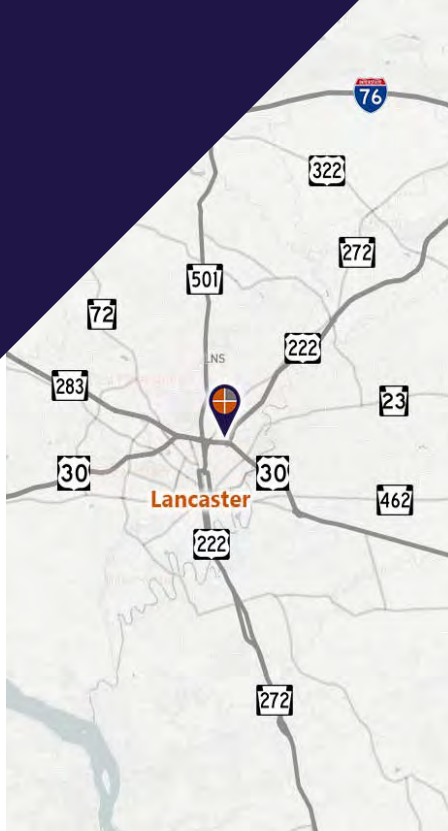


## FOR LEASE

Prime professional office space located in the Crooked Oak Village business complex in Lancaster.



**NEW LEASE RATES**  
**+ MOVE-IN INCENTIVES**



**Marisa Benjamin**  
Cell: 717.615.1665  
marisa@truecommercial.com

For More Information Call: 717.850.TRUE (8783) | 1018 N. Christian St. Lancaster, PA 17602 | [www.TRUECommercial.com](http://www.TRUECommercial.com)

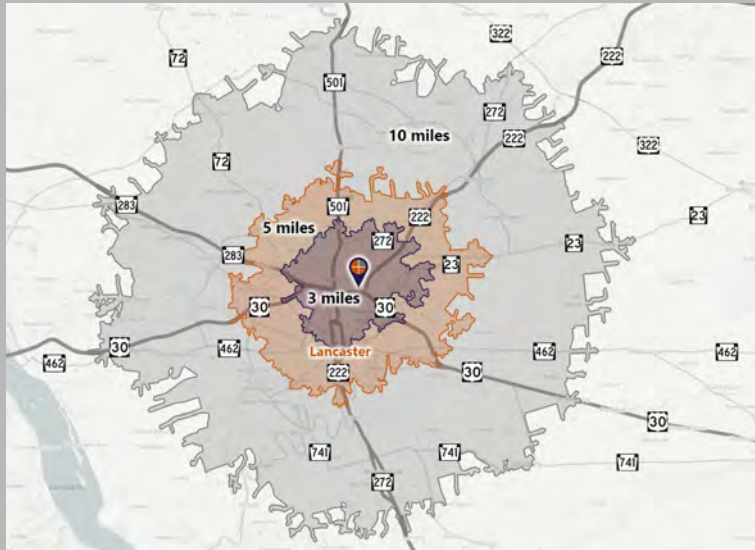
The information has been secured from sources we believe to be reliable. TRUE Commercial Real Estate LLC makes no representations or warranties, express or implied, as to the accuracy of the information. References to square footage or age are approximate. Buyer must verify the information and bears all risk for any inaccuracies.

# CROOKED OAK VILLAGE: OFFICE CONDO

## DEMOGRAPHICS

Variable	600F Eden Road Lancaster, PA 17601		
Travel Distance from Site	3 miles	5 miles	10 miles
Total Population	43,725	133,653	297,703
Population Density (Pop per Sq. Mile)	3,179.5	3,004.4	1,461.9
Total Daytime Population	66,322	166,730	320,213
Total Households	17,405	51,323	114,816
Per Capita Income	\$44,185	\$40,330	\$42,698
Average Household Income	\$110,176	\$103,773	\$110,041
Average Disposable Income	\$83,792	\$79,134	\$83,663
Total (SIC01-99) Businesses	3,350	6,956	12,620
Total (SIC01-99) Employees	54,855	107,940	187,511
Health Care	\$128,140,539	\$355,080,994	\$854,424,933
Medical Services	\$26,013,638	\$71,927,127	\$173,548,831
Physician Services	\$5,283,057	\$14,406,489	\$35,036,491
Dental Services	\$8,679,857	\$24,291,997	\$58,153,430

## Travel Distance from Site



## PROPERTY & MARKET OVERVIEW

Crooked Oak Village is in the heart of Manheim Township, Lancaster County. 600-F Eden Road is a well-established professional office complex offering excellent accessibility and a strong business environment. Just off Oregon Pike (Route 272) and moments from the on/off ramps of US Route 30, US Route 222, and Route 283, the property offers quick connections to Downtown Lancaster and surrounding communities.

A unique opportunity to lease office space within the Crooked Oak Village offering two (2) units. The first, Unit 1, with 1,175± SF space located on the first floor offers four (4) private offices, with two (2) restrooms, and a kitchenette. The second, Unit 2, with 2,362± SF space has a private first floor entry with stairs leading to the second floor and offers four (4) private offices with multiple open space areas for cubicles/bullpen area, an area for printer/copier setup, one (1) restroom, a breakroom and storage room. Both units enjoy ample on-site parking and a highly visible, easy-to-find location, making them ideal for professional offices or medical practices. Unit 2 has the ability to be split into two (2) separate spaces.

Join a diverse professional tenant mix, including: Eden Natural Care Center, Edward Jones, Cameo Skin & Body Wellness, Crooked Oak Dental Associates, Alliance, KinderCare Learning Centers, Providence Behavioral Health Services, Kingsview Partners, First American Abstract, and Regal Abstract.

With nearby amenities, strong traffic corridors, and a well-maintained complex, Crooked Oak Village is an exceptional place for your business to grow. Contact us today to schedule a private tour and learn more about these leasing opportunities.

**Landlord is willing to offer a tenant improvement allowance for qualified tenants, subject to lease terms, tenant creditworthiness and approved improvements.**

## PROPERTY DETAILS

- Total Building Size:..... 5,558 SF
- Lease Rate:..... Negotiable
- Lease Terms:..... Negotiable
- NNN Costs:..... \$4.10/SF
- Zoning:..... I-1 Industrial Dist. w/D-R Overlay
- Date Available:..... Immediately
- Parking:..... On-Site, Shared
- Roof Type:..... Shingles
- Construction:..... Masonry
- Ceiling Height:..... 8' to 10'
- Year Built:..... 1986
- Heating:..... Electric HVAC
- Cooling:..... Central Air
- Water/Sewer:..... Public

## TRAFFIC COUNTS

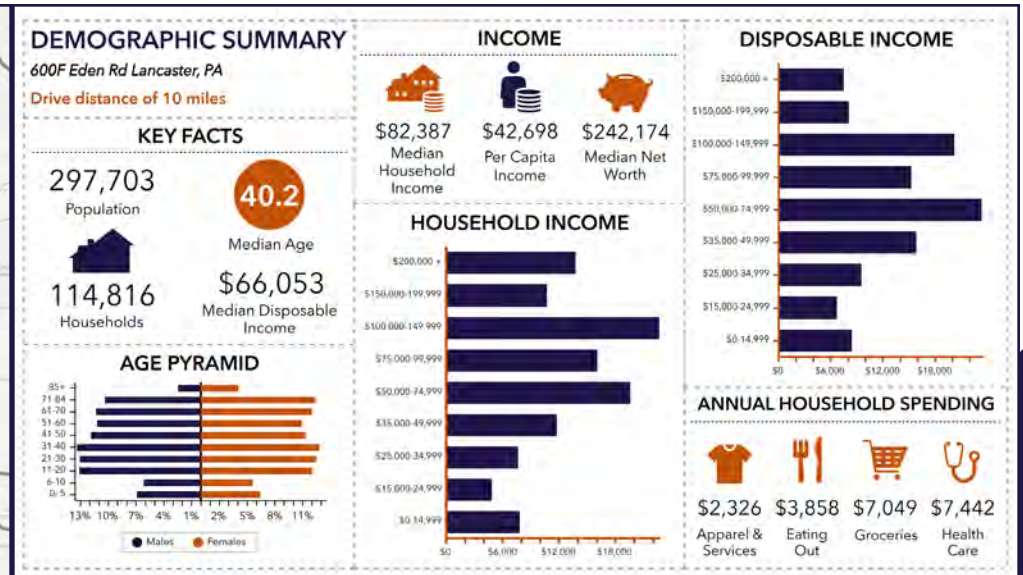
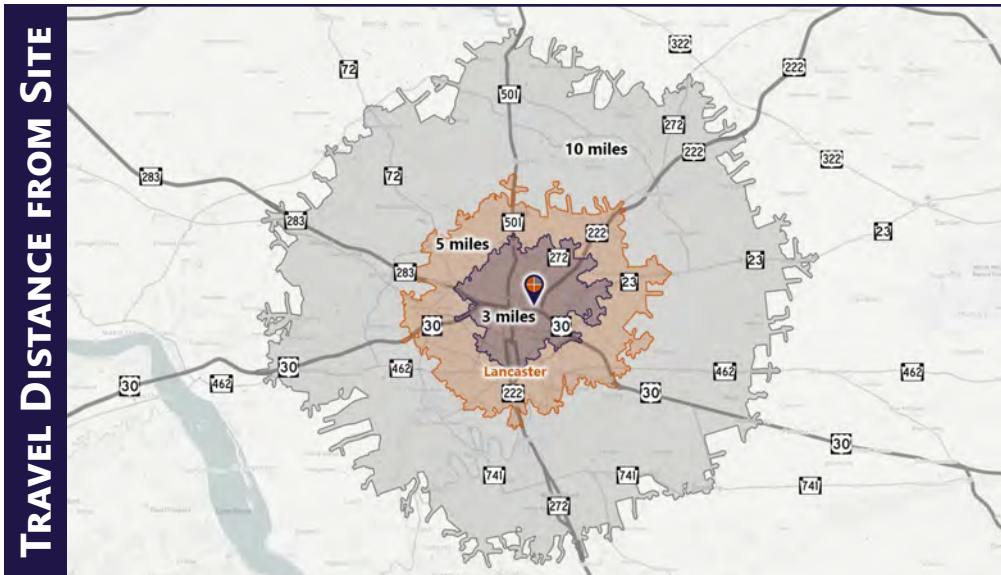
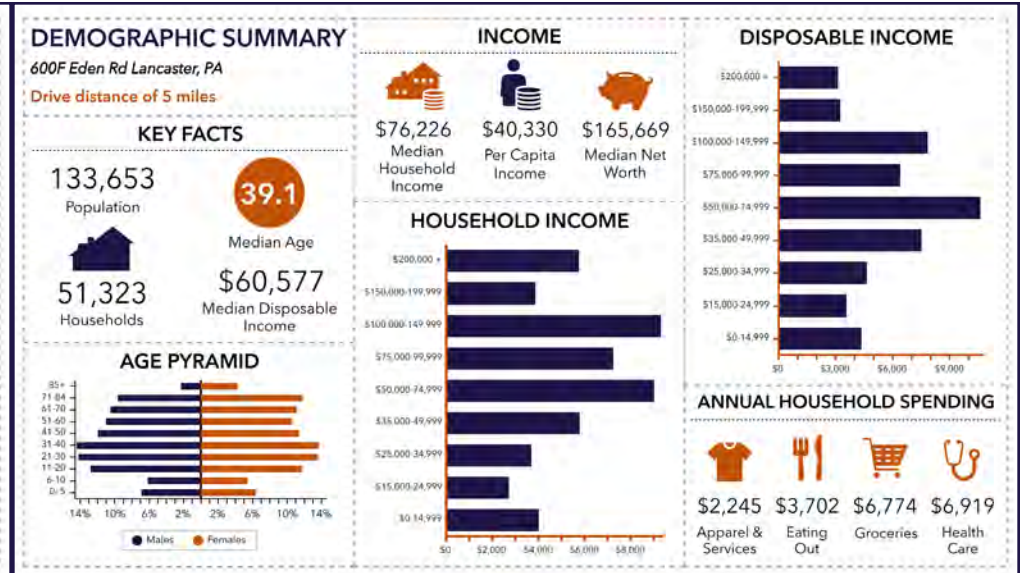
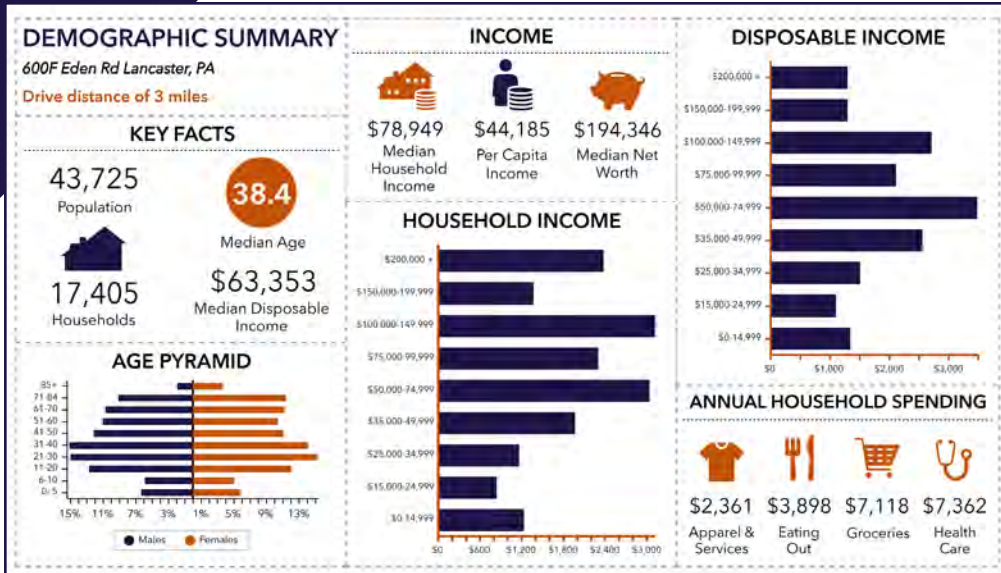
- Eden Road:..... 5,545 VPD
- Oregon Pike/Route 272:..... 16,998 VPD
- US Route 30:..... 149,465 VPD

## AVAILABLE SPACES

- Unit 1 - First Floor:..... 1,175± SF
- Unit 2 - Second Floor:..... 2,362± SF

**For More Information Call: 717.850.TRUE (8783) | www.TRUECommercial.com**

# DEMOGRAPHIC SUMMARY



For More Information Call: 717.850.TRUE (8783) | [www.TRUECommercial.com](http://www.TRUECommercial.com)

# ESTABLISHED REGIONAL AREA MAP

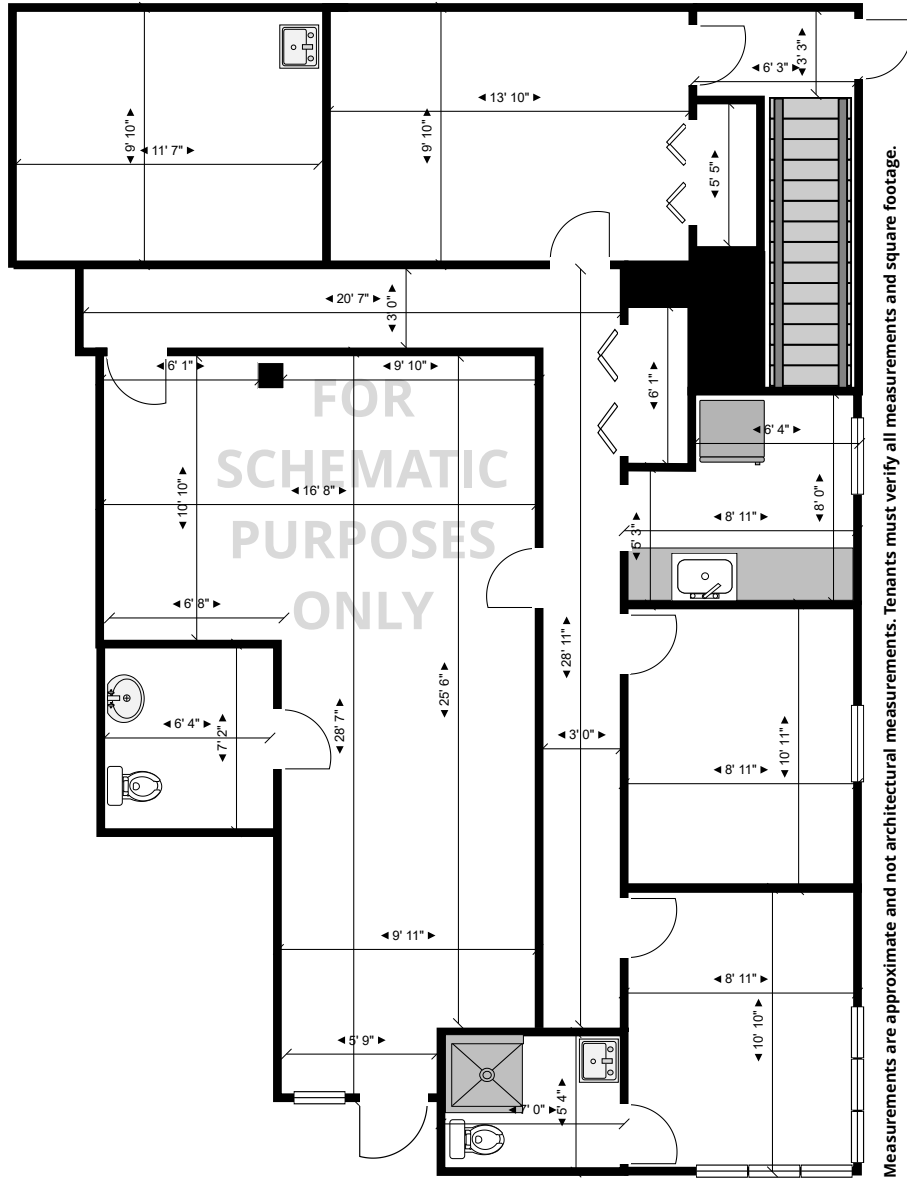


For More Information Call: 717.850.TRUE (8783) | [www.TRUECommercial.com](http://www.TRUECommercial.com)

The information has been secured from sources we believe to be reliable. TRUE Commercial Real Estate LLC makes no representations or warranties, express or implied, as to the accuracy of the information. References to square footage or age are approximate. Buyer must verify the information and bears all risk for any inaccuracies.



# FLOOR PLAN & OVERVIEW | UNIT 1



## UNIT 1 (FIRST FLOOR) OVERVIEW

- 1,175± SF
- Four (4) private offices
- Two (2) restrooms
- Kitchenette area
- Convenient first-floor access



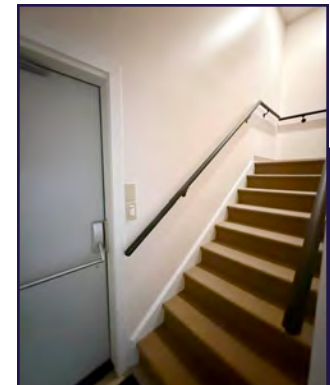
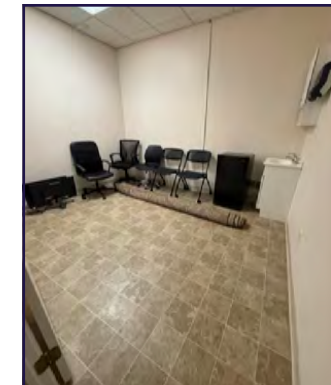
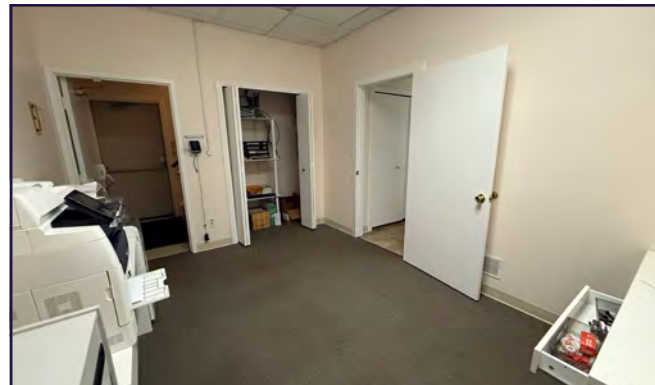
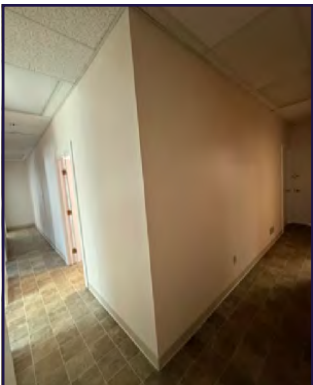
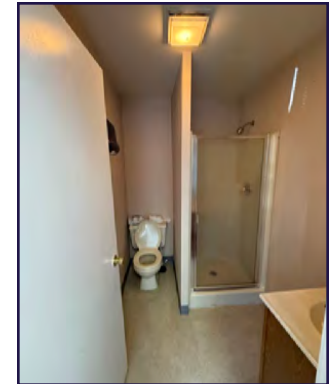
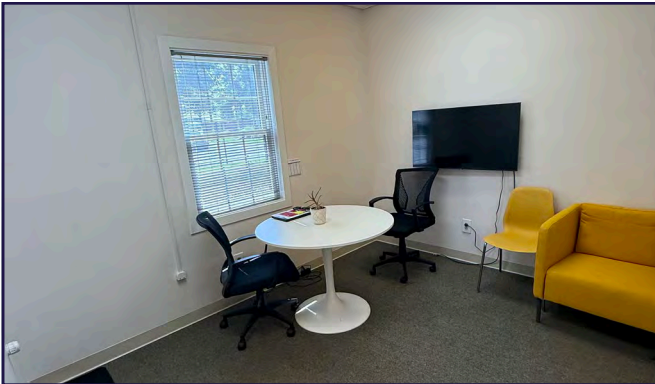
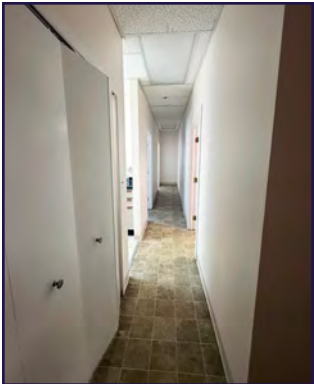
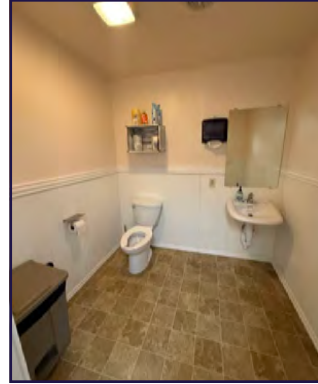
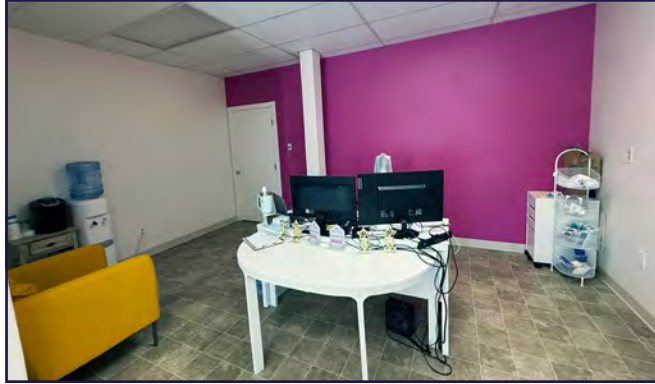
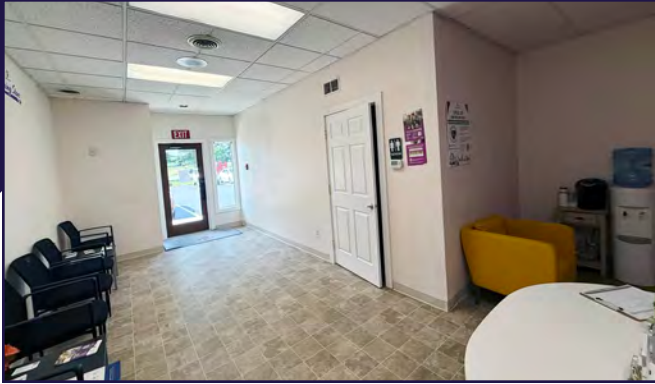
### RENT: \$1,870/MONTH

**Includes:** RE Taxes, property Insurance, common area maintenance, water/sewer/trash and fire alarm

**Tenant Covers:** Electric, insurance and internet

For More Information Call: 717.850.TRUE (8783) | [www.TRUECommercial.com](http://www.TRUECommercial.com)

# INTERIOR PHOTOS | UNIT 1 - FIRST FLOOR



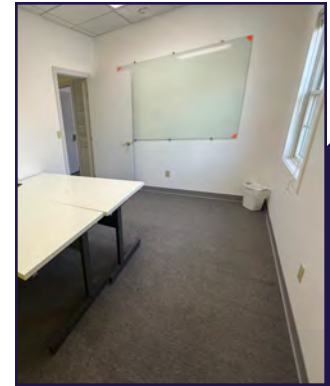
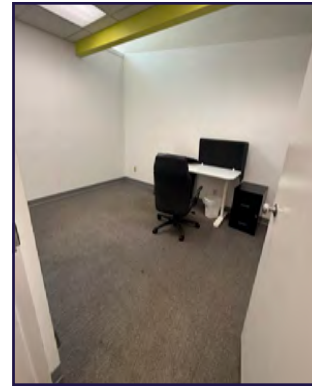
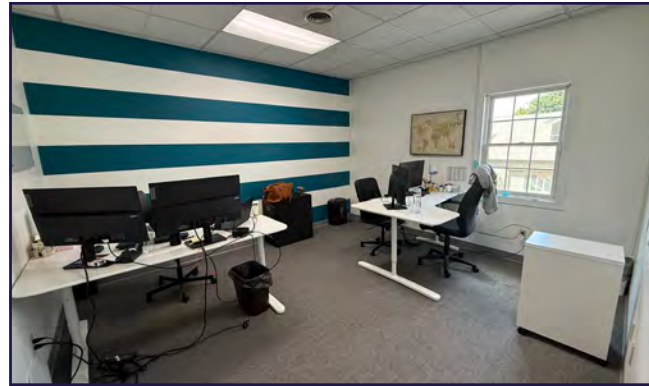
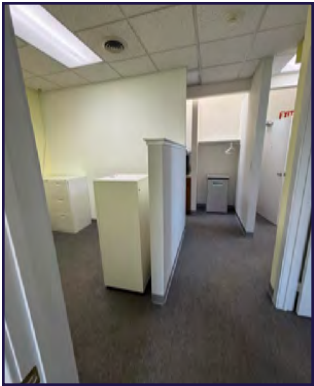
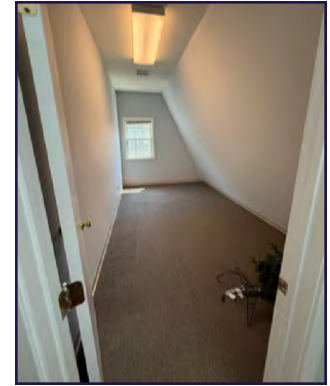
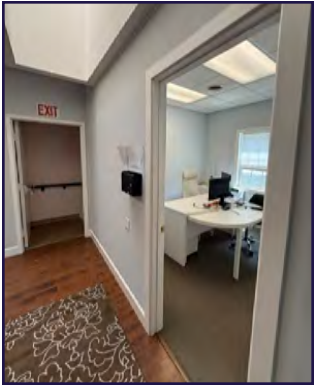
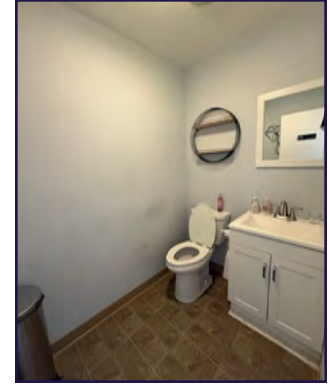
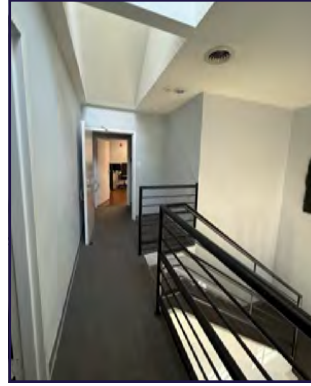
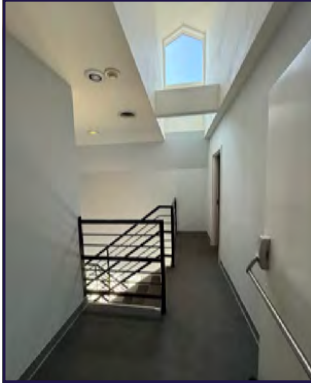
For More Information Call: 717.850.TRUE (8783) | [www.TRUECommercial.com](http://www.TRUECommercial.com)

The information has been secured from sources we believe to be reliable. TRUE Commercial Real Estate LLC makes no representations or warranties, express or implied, as to the accuracy of the information. References to square footage or age are approximate. Buyer must verify the information and bears all risk for any inaccuracies.





# INTERIOR PHOTOS | UNIT 2 - SECOND FLOOR



For More Information Call: 717.850.TRUE (8783) | [www.TRUECommercial.com](http://www.TRUECommercial.com)

The information has been secured from sources we believe to be reliable. TRUE Commercial Real Estate LLC makes no representations or warranties, express or implied, as to the accuracy of the information. References to square footage or age are approximate. Buyer must verify the information and bears all risk for any inaccuracies.

# AERIAL DRONE & BUILDING PHOTOS



For More Information Call: 717.850.TRUE (8783) | [www.TRUECommercial.com](http://www.TRUECommercial.com)

The information has been secured from sources we believe to be reliable. TRUE Commercial Real Estate LLC makes no representations or warranties, express or implied, as to the accuracy of the information. References to square footage or age are approximate. Buyer must verify the information and bears all risk for any inaccuracies.



# AERIAL DRONE PHOTOS



For More Information Call: 717.850.TRUE (8783) | [www.TRUECommercial.com](http://www.TRUECommercial.com)

The information has been secured from sources we believe to be reliable. TRUE Commercial Real Estate LLC makes no representations or warranties, express or implied, as to the accuracy of the information. References to square footage or age are approximate. Buyer must verify the information and bears all risk for any inaccuracies.